

C&K LM Series Subminiature Precision Snap-acting Switches

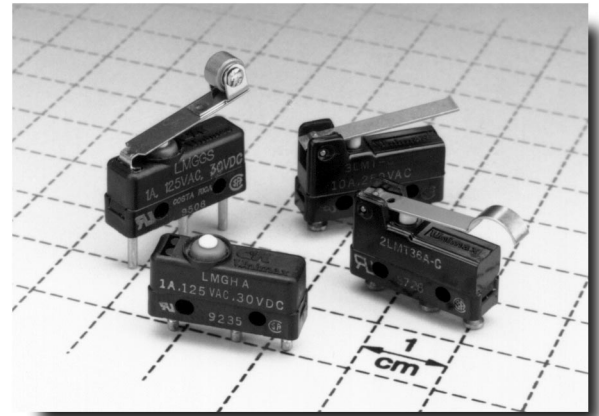


Features/Benefits

- Sealed actuator and case—meets IP65 degree of protection
- Compact size—ideal when space is limited
- Long life—100,000 cycles typical
- Reliable snap-acting mechanism

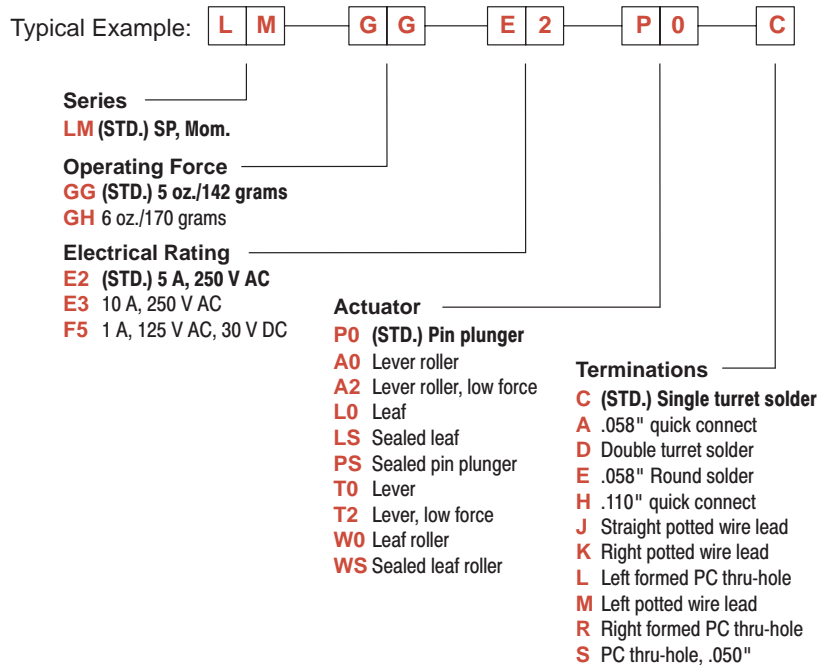
Typical Applications

- Laboratory equipment
- Industrial cleaning equipment
- Communications devices



Build-A-Switch

Our easy Build-A-Switch concept allows you to mix and match options to create the switch you need. Below is a complete listing of options shown in catalog. To order, simply select desired option from each category and place in the appropriate box. A switch with standard options is shown on page G-22. Available options are shown and described on pages G-22 thru G-25. For additional options not shown in catalog, consult Customer Service Center.



Snap-acting

G



C&K LM Series Subminiature Precision Snap-acting Switches

ELECTRICAL RATING

OPTION CODE	CONTACT MATERIAL		ELECTRICAL RATING
	MOVABLE CONTACT	STATIONARY CONTACT	
E2 (STD.)	Fine silver.	Fine silver welded on copper base CDA alloy C10200.	5 AMPS @ 250 V AC.
E3			10 AMPS @ 250 V AC.
F5	Fine silver with 24K gold plate.	Fine silver with 24K gold plate on copper base CDA alloy C10200.	From low level* to 1 AMP @ 125 V AC, 30 V DC.

All models  with all options.

Consult Customer Service Center for availability and delivery of nonstandard ratings.

* Low Level=conditions where no arcing occurs during switching, i.e., 0.4 VA max. @ 20 V AC or DC max.

ACTUATOR

OPTION CODE	FIG.	DIM. A	DIM. B	DIM. C
P0 (STD.)	3	.30 (7,6)	.330 ± .015 (8,38 ± 0,38)	—
A0	1	.25 (6,4)	.560 ± .060 (14,22 ± 1,52)	.19 dia. (4,80)
A2	1	.54 (13,7)	.550 ± .060 (13,97 ± 1,52)	.19 dia. (4,80)
L0	2	.28 (7,1)	.350 ± .015 (8,89 ± 0,38)	—
LS*	2	.28 (7,1)	.350 ± .015 (8,89 ± 0,38)	—
PS*	3	.30 (7,6)	.330 ± .015 (8,38 ± 0,38)	—
T0	4	.29 (7,4)	.340 ± .060 (8,64 ± 1,52)	—
T2	4	.57 (14,5)	.335 ± .060 (8,51 ± 1,52)	—
W0	5	.20 (5,1)	.570 ± .015 (14,48 ± 0,38)	.19 dia. (4,80)
WS*	5	.20 (5,1)	.570 ± .015 (14,48 ± 0,38)	.19 dia. (4,80)

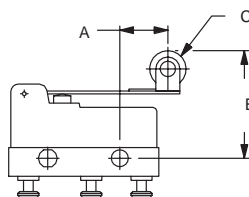


FIG. 1
Lever Roller

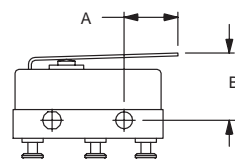


FIG. 2
Leaf

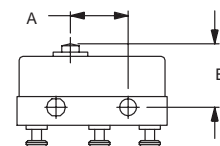


FIG. 3
Pin Plunger

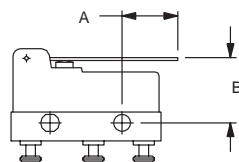


FIG. 4
Lever

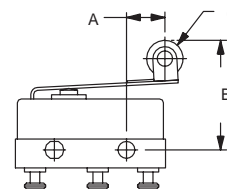


FIG. 5
Leaf Roller

* Actuators sealed against the entrance of airborne contaminants and/or splashing liquids.

SWITCH CHARACTERISTICS

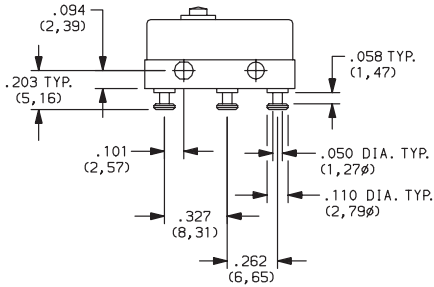
OPTION CODE	MAXIMUM OPERATING FORCE (OZ./GRAMS)		MINIMUM RELEASE FORCE (OZ./GRAMS)		MAXIMUM DIFFERENTIAL TRAVEL	MAXIMUM PRETRAVEL	MAXIMUM OVERTRAVEL
	GG	GH	GG	GH	ALL FORCES	ALL FORCES	ALL FORCES
A0	1.41 40	1.76 50	.25 7	.25 7	.019 (0,48)	.085 (2,16)	.011 (0,28)
A2	1.23 35	1.41 40	.14 4	.28 8	.062 (1,57)	.240 (6,10)	.030 (0,76)
L0	5 142	6 170	.49 14	.49 14	.031 (0,79)	.094 (2,39)	.047 (1,19)
LS	8 227	—	.99 28	—	.031 (0,79)	.094 (2,39)	.047 (1,19)
P0	5 142	6 170	.99 28	2 57	.004 (0,10)	.030 (0,76)	.005 (0,13)
PS	8 227	—	2 57	—	.004 (0,10)	.030 (0,76)	.005 (0,13)
T0	1.41 40	1.76 50	.25 7	.25 7	.019 (0,48)	.085 (2,16)	.011 (0,28)
T2	1.23 35	1.41 40	.14 4	.28 8	.062 (1,57)	.240 (6,10)	.030 (0,76)
W0	5 142	6 170	.49 14	.49 14	.031 (0,79)	.094 (2,39)	.047 (1,19)
WS	8 227	—	3 85	—	.031 (0,79)	.094 (2,39)	.047 (1,19)

NOTE: For basic switch operating forces, see page G-22.

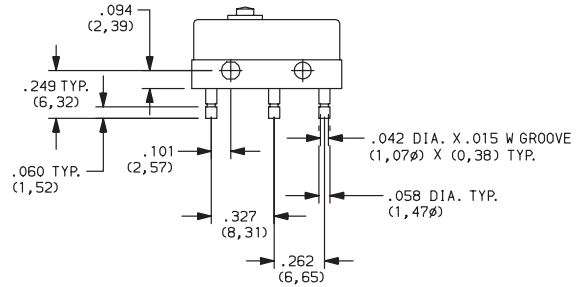
C&K LM Series Subminiature Precision Snap-acting Switches

TERMINATIONS

C (STD.) SINGLE TURRET SOLDER

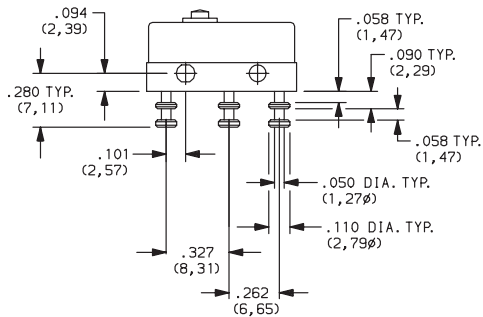


A .058" DIAMETER QUICK CONNECT

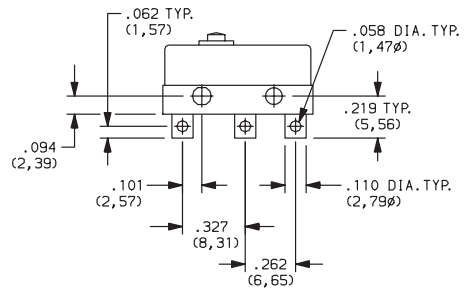


NOTE: Use Amp Quick Connect Part No. 60789-1.

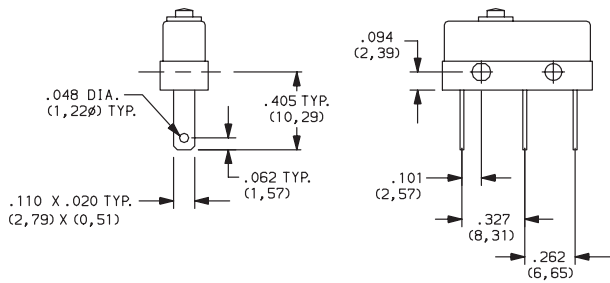
D DOUBLE TURRET SOLDER



E .058" DIAMETER ROUND SOLDER

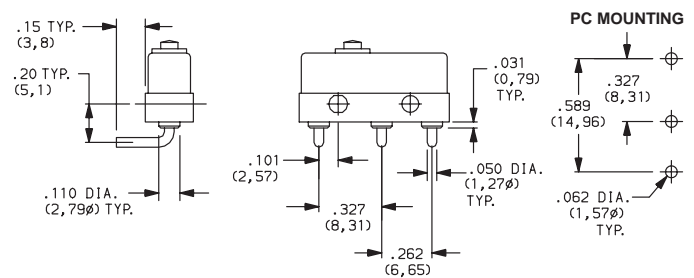


H .110" QUICK CONNECT



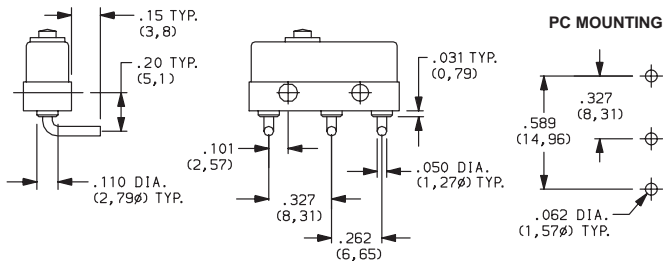
NOTE: Use Amp Quick Connect Part No. 640925-1. Minimum quantity required, consult Customer Service Center.

L LEFT FORMED PC THRU-HOLE



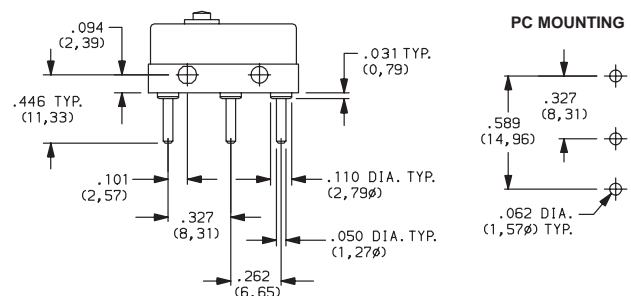
NOTE: Minimum quantity required, consult Customer Service Center.

R RIGHT FORMED PC THRU-HOLE



NOTE: Minimum quantity required, consult Customer Service Center.

S PC THRU-HOLE, .050"



NOTE: Minimum quantity required, consult Customer Service Center.

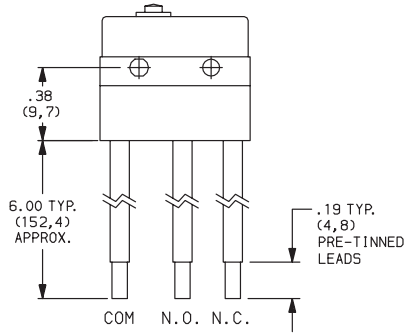
Snap-acting



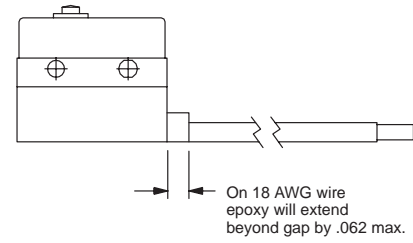
C&K LM Series Subminiature Precision Snap-acting Switches

TERMINATIONS

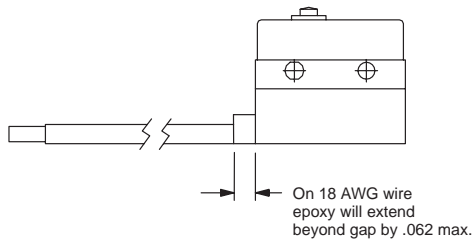
J STRAIGHT POTTED WIRE LEAD



K RIGHT POTTED WIRE LEAD



M LEFT POTTED WIRE LEAD



RATING	WIRE SIZE
1 AMP	22 AWG
5 AMPS	20 AWG
10 AMPS	18 AWG

TERMINAL	WIRE COLOR
COMMON	BLACK
NORMALLY OPEN	WHITE
NORMALLY CLOSED	RED